

Build notes at a glance

- Electrics -
- Dual Fuel Radiators in both bathrooms
 - floor light to rear of lodge
 - Trio Pendant in Kitchen
 - Plinth Lights in Kitchen
 - Provision for coax connectivity in entrance cupboard
 - Wall wardrobes to 2 bedrooms
 - Wall lights in 2 bedrooms and 5 amp sockets in bedroom 1
 - Provision for washer & Dryer
- Plumbing -
- Cold Tap to rear of lodge
 - Pipes to come through floor for Rads
 - WC's 250mm from wall
 - Boiler mounted at standard height
 - Provision for washer Dryer
- Joinery/General -
- Architrave between trillights and Sliding doors to be one piece to allow for curtain rail
 - Velux in entrance/hall CK04
 - GGL 2070 550 x 980
 - Wardrobe shelving detail on plan
 - provision for wood burner to dining side
 - Small box sections to front end elevation
 - Bedroom 1 Wardrobe - Please leave full height of robe for storage
- Paint -
- Ceilings: skirts, Arches & window linings In Porridge Oats
 - Walls and any painted doors Silver
 - Bedroom 1 bed wall Floating Veil PPG1022-3
 - Bedroom 2 bed wall Hurricane Haze PPG1032-2

Cedar box detailing

Projecting box detail

Flush box detail

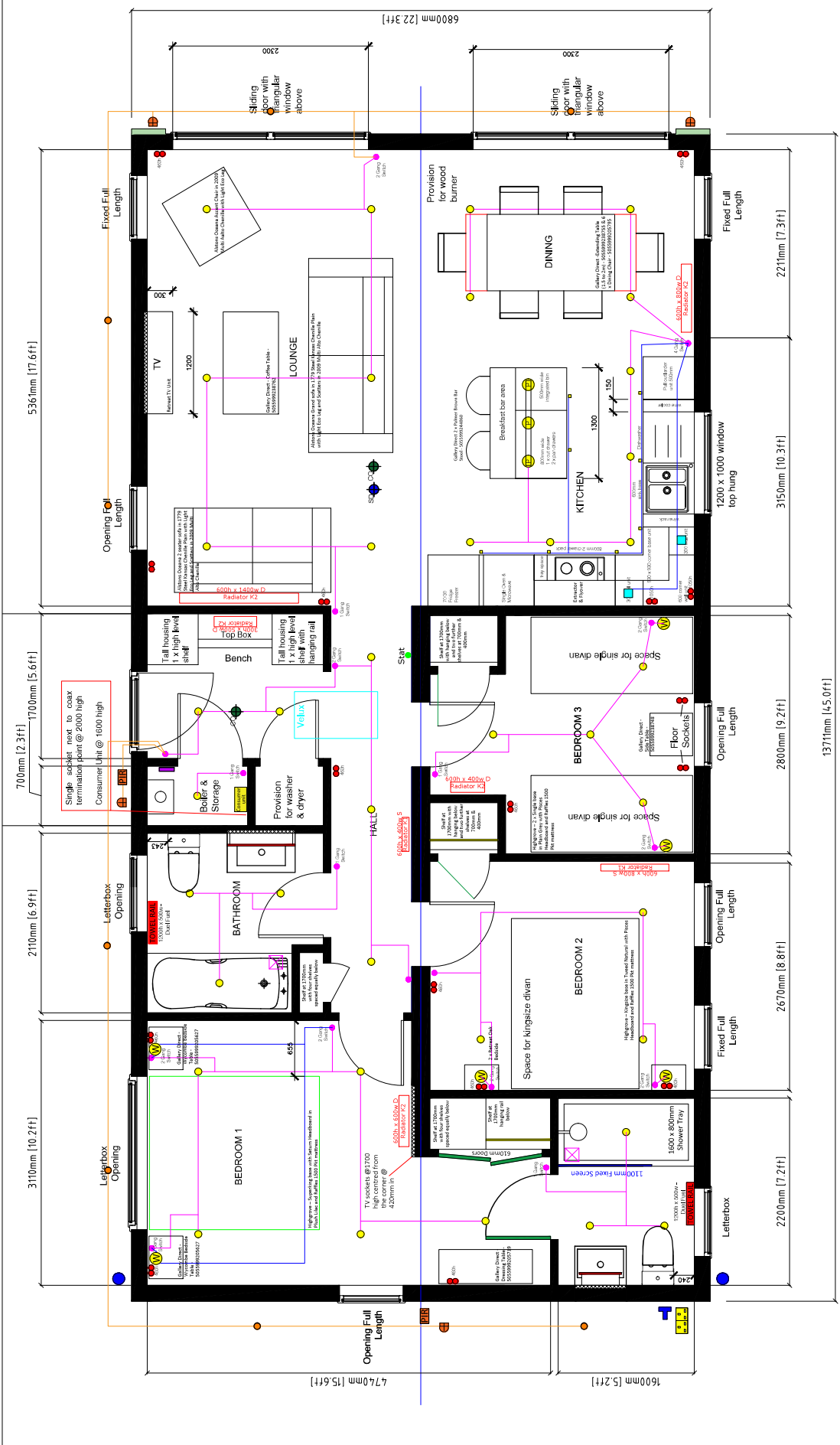
Roof format

Traditional

Viewed left side of plan

CHECKED BY

M Gorge



Single/Double electrical socket

Double electrical socket + USB

Coax socket

5amp socket

R45

Duct

BT socket

Interior light switch

Interior LED Down Lights

Plinth Light

Interior wall light

Pendant light

Under cabinet light

Lighting strip

Illuminated mirror

External soffit light

Photocell

PIR movement sensor

External wall light

Fused spur

Room thermostat

Heated towel rail

Timer-for-exterior lights

Extractor fan

External double socket

Exterior cold water tap

Exterior-hot-tap

Exterior-pre-mix tap

Hot-tub isolator

Rainwater downpipe

Holdenby oak door

Painted Ply/Dordogne door

Strengthened partition areas

Fibre-optics

underfloor-heating & control

If icon not applicable strike-through

CLIENT

Scampston Park Lodges

PROJECT

45x22ft 3bed Retreat

TITLE

Plot 30 Show Lodge

DRAWING STATUS

Provisional

CHECKED BY

M Gorge

SCALE

NTS

DATE

10/02/2023

DRAWN BY

Kathryn Anderson

DRAWING No

SCP30-10-02-2023

This drawing remains the property of Retreat Homes and should not be copied or reproduced without prior written consent.

the retreat

Tel: 016973 52033

mail@retreathomes.co.uk

www.retreathomes.co.uk